



# CORPORATE REALTY

201 St. Charles Ave., Suite 4411, New Orleans, LA 70170  
504.581.5005 | [corp-realty.com](http://corp-realty.com)

RETAIL SPACE | FOR LEASE

## Highly Visible Commercial Space

1029 Oretha Castle Haley Boulevard

NEW ORLEANS, LA 70113

**Lawless Turner**

[lturner@corp-realty.com](mailto:lturner@corp-realty.com)

504.581.5005



## HIGHLY VISIBLE LOCATION ALONG PONTCHARTRAIN EXPRESSWAY

1029 Oretha Castle Haley Boulevard, New Orleans, LA 70113

### DESCRIPTION

Highly visible and historically successful, this 1,850 sf open retail space is located at the corner of Oretha Castle Haley Blvd and Calliope St within the Downtown Development District (DDD). Originally a historic auto parts dealership, the building was fully renovated in 2014, blending historic charm with modern functionality.

Features include:

- **HIGH VISIBILITY:** Seen daily by vehicles crossing the city, including Pontchartrain Expressway traffic.

- **VERSATILE LAYOUT:** 1 office with 15' ceilings and 2 restrooms with showers.
- **AMPLE PARKING:** 19 onsite spaces, with 50+ additional spaces available across the street at an affordable rate (last contract \$250/month for 50 spaces).

Previously leased by both a party supply business and a fitness studio, this space is ideal for uses such as retail, showroom, fitness, food service, or office.

### OVERVIEW

**SIZE:**

1,850 rsf

**RENTAL RATE:**

\$20.00/rsf, NNN (NNN is \$5.19/sf/mo)

**PARKING:**

50+ spaces in total

**ZONING:**

CBD-1



**CORPORATE REALTY**

**Lawless Turner**  
lturner@corp-realty.com  
504.581.5005

# 1029 ORETHA CASTLE HALEY BLVD.

## ADDITIONAL INFORMATION

### LOCATION DETAILS

**CO-TENANTS:** Co-tenants include Papa John's Pizza, Brandy's Wine Warehouse, and Flaw-luxe Hair Studio.

**SIGNAGE:** Brand identity can be installed prominently on the building (subject to zoning restrictions).

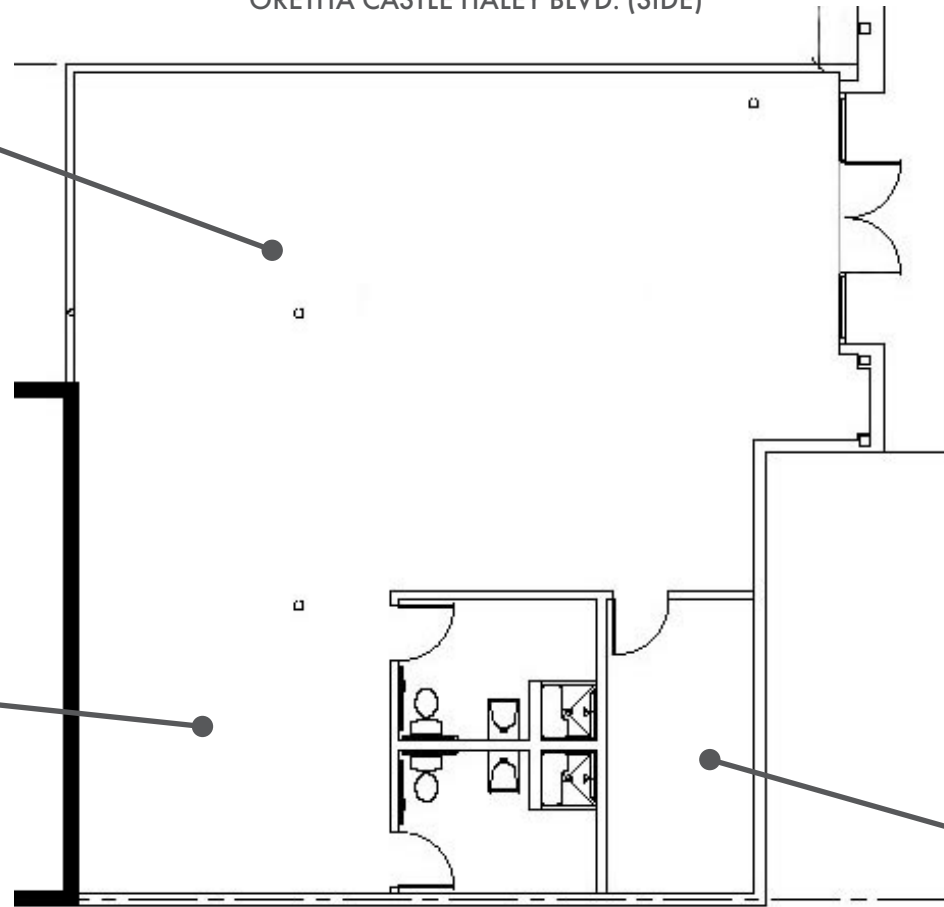
**VISIBILITY:** This retail center is located on Oretha Castle Haley Blvd, which has an average of over 5,000 vehicles per day. It is also located very near several major thoroughfares, such as the Pontchartrain Expressway, Loyola Avenue, and Howard Avenue.



# 1029 ORETHA CASTLE HALEY BLVD. FLOOR PLAN



ORETHA CASTLE HALEY BLVD. (SIDE)

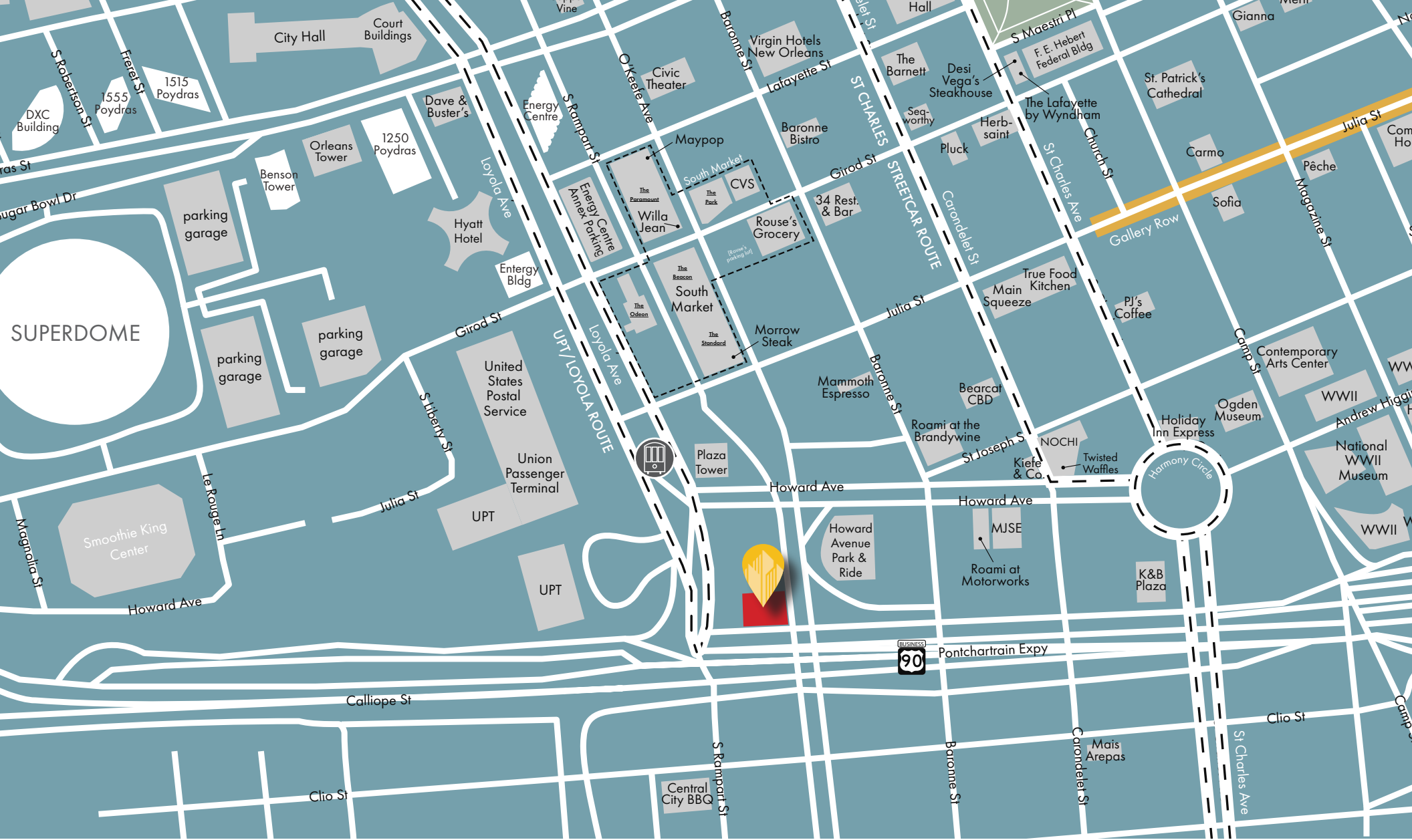


CALLOPE STREET



CORPORATE REALTY

**Lawless Turner**  
lturner@corp-realty.com  
504.581.5005



**1029 ORETHA CASTLE HALEY BLVD.**



**CORPORATE REALTY**

**Lawless Turner**  
ltturner@corp-realty.com  
504.581.5005

RETAIL SPACE | FOR LEASE

# Highly Visible Commercial Space

1029 Oretha Castle Haley Boulevard, New Orleans, LA 70113



**Lawless Turner**

ltturner@corp-realty.com  
504.581.5005

**CORPORATE REALTY**

201 St. Charles Ave., Suite 4411, New Orleans, LA 70170  
504.581.5005 | [corp-realty.com](http://corp-realty.com)

The information contained herein has been obtained from sources that we deem reliable. No representation or warranty is made as to the accuracy thereof, and it is submitted subject to errors, omissions, change of price, or other conditions, or withdrawal without notice. Licensed in Louisiana, 12/2024.