

JUNE 2020 TRANSACTIONS

Home-cooked Talent

OFFICE LEASES

TENANT	BUILDING	SIZE	CR BROKER(S)
Bienvenu Foster Ryan & O'Bannon, LLC	Energy Centre (New Orleans, La.)	2,796 SF	S. Graf (Landlord Rep)
Ceco Concrete Construction	3748 N Causeway Blvd (Metairie, La.)	5,950 SF	C. Lewis (Landlord Rep)
Center for Learning and Development	3501 N Causeway Blvd (Metairie, La.)	2,720 SF	D. Whalen (Tenant Rep)
Environmental Resources Management Southwest Inc.	Three Lakeway (Metairie, La.)	8,781 SF	Siegel (Tenant Rep)/Sossaman (LL Rep)
General Steamship Corporation	Causeway Plaza II (Metairie, La.)	2,376 SF	Lewis (Tenant Rep)/Cohn (LL Rep)
Gulf South Lithotripsy	Causeway Plaza I (Metairie, La.)	964 SF	J. Cohn (Landlord Rep)
Hangartner Rydberg & Terrell LLC	Hancock Whitney Center (New Orleans, La.)	2,215 SF	B. Sossaman (Landlord Rep)
Home Care Solutions	3421 N Causeway Blvd (Metairie, La.)	2,955 SF	D. Whalen (Tenant Rep)
KR Industries	Two Lakeway (Metairie, La.)	699 SF	B. Sossaman (Landlord Rep)
Lagniappe Travel Inc	Energy Centre (New Orleans, La.)	1,495 SF	S. Graf (Landlord Rep)
Massachusetts Mutual Life Insurance Co.	Three Lakeway (Metairie, La.)	7,617 SF	Lewis (Tenant Rep)/Sossaman (LL Rep)
Michael J. Mestayer, A Professional Corporation	Energy Centre (New Orleans, La.)	1,599 SF	S. Graf (Landlord Rep)
Millennium Healthcare	Causeway Plaza I (Metairie, La.)	5,173 SF	J. Cohn (Landlord Rep)
Nehlig Services	Hancock Whitney Center (New Orleans, La.)	1,608 SF	B. Sossaman (Landlord Rep)
Nippon Kaji	Metairie Tower (Metairie, La.)	3,266 SF	B. Sossaman (Landlord Rep)
Persuasion LLC	Energy Centre (New Orleans, La.)	543 SF	S. Graf (Landlord Rep)
Prevail Homecare	3445 N Causeway Blvd (Metairie, La.)	728 SF	J. Cohn (Landlord Rep)
Riess LeMieux LLC	Energy Centre (New Orleans, La.)	624 SF	S. Graf (Landlord Rep)
Serenity Hospice Services	3445 N Causeway Blvd (Metairie, La.)	1,740 SF	J. Cohn (Landlord Rep)
Shah Tazbeck & Almerico LLP	336 Lafayette Street (New Orleans, La.)	1,300 SF	Sadler/Graf (Landlord Reps)
Southeast Louisiana Legal Services Corporation	Oakwood Corporate Center (Gretna, La.)	2,712 SF	Davis (Tenant Rep)/Sossaman (LL Rep)
The Lemoine Company LLC	300 Lafayette Street (New Orleans, La.)	5,150 SF	A. Huseman (Landlord Rep)

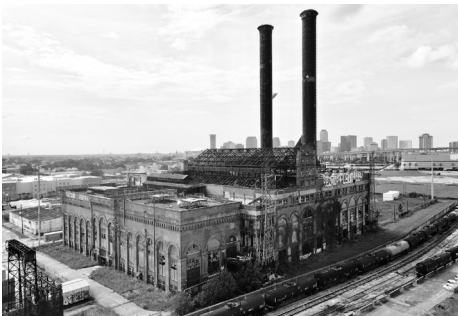
RETAIL LEASES

TENANT	LOCATION	SIZE	CR BROKER(S)
Five Below	Meridian Crossroads (Meridian, Ms.)	8,585 SF	R. Weber (Tenant Rep)
Herradura Mexican Restaurant	1554 Martin Luther King Blvd (Houma, La.)	5,510 SF	A. Lavin (Tenant Rep)

NEW LISTINGS

PROPERTY	LOCATION	TYPE	SIZE	CR BROKER(S)
3815 Lapalco Boulevard	Harvey, La.	car dealership facility for sale	25,943 SF	A. Lavin
2950 College Drive	Baton Rouge, La.	retail end-cap for lease	4,510 SF	R. Weber

FEATURED PROPERTY



Corporate Realty is pleased to announce that it has been retained to market for sale the iconic Market Street Power Plant (MSPP) property in downtown New Orleans. This property is located immediately upriver from the Convention Center's 47-acre development site and sits squarely between the high-demand Warehouse District and the very active Lower Garden District. The property consists of all or a portion of 5 squares of ground comprising over 7 acres along with the historic (1902) 160,000 square foot former power plant building. The Corporate Realty team handling this important assignment is Mike Siegel, Hayden Wren, Scott Graf, and William Sadler.



CORPORATE REALTY

201 St. Charles Avenue, Suite 4411, New Orleans, LA 70170 | 504.581.5005 | corp-realty.com