

OFFICE LEASES

TENANT	BUILDING	SIZE	CR BROKER(S)
Allen & Gooch	One Lakeway (Metairie, La.)	7,850 SF	B. Sossaman (Landlord Rep)
Atkins File	Galleria (Metairie, La.)	3,179 SF	J. Cohn (Landlord Rep)
Burns & Wilcox	Two Lakeway (Metairie, La.)	13,279 SF	B. Sossaman (Landlord Rep)
Capital One	Louisiana Tower (Shreveport, La.)	31,259 SF	Siegel / White (Tenant Reps)
C.H. Robinson Worldwide	Galleria (Metairie, La.)	2,594 SF	J. Cohn (Landlord Rep)
Darren Iapichino	1114 Carrollton Avenue (New Orleans, La.)	1,200 SF	B. Jacobson (Tenant Rep)
Doyle Land Services	400 Lafayette Street (New Orleans, La.)	14,500 SF	H. Wren (Tenant Rep)
Enven Energy Ventures LLC	Two Lakeway (Metairie, La.)	14,648 SF	B. Sossaman (Landlord Rep)
ExamOne Worldwide	Causeway Plaza (Metairie, La.)	1,478 SF	J. Cohn (Landlord Rep)
Ironshore Insurance Services LLC	400 Poydras Building (New Orleans, La.)	1,636 SF	Whalen / White (Tenant Rep)
Larzelere Picou Wells Simpson Lonero LLC	Two Lakeway (Metairie, La.)	10,823 SF	B. Sossaman (Landlord Rep)
Mark Murad	3601-05 & 3611 Prytania (New Orleans, La.)	8,500 SF	H. Wren (Tenant Rep)
New Orleans Regional Physician Hospital	Two Lakeway (Metairie, La.)	7,234 SF	B. Sossaman (Landlord Rep)
Palm Energy Offshore LLC	Two Lakeway (Metairie, La.)	850 SF	B. Sossaman (Landlord Rep)
Patterson State Bank	Causeway Plaza (Metairie, La.)	1,252 SF	J. Cohn (Landlord Rep)
Republic Business Credit	Place St. Charles (New Orleans, La.)	5,823 SF	B. Davis (Landlord Rep)
Southern Coffee Company	637 Tchoupitoulas Street (New Orleans, La.)	1,000 SF	B. Jacobson (Tenant Rep)

RETAIL LEASES

TENANT	LOCATION	SIZE	CR BROKER(S)
Area 53 LLC	720 Veterans Blvd (Metairie, La.)	30,000 SF	H. Wren
Hamdallah LLC	4421 Airline Drive (Metairie, La.)	12,500 SF	H. Wren
Jackson Hewitt Tax Service	Westgate Shopping Center (Kenner, La.)	2,000 SF	S. Swan
Lids	Northshore Square (Slidell, La.)	513 SF	S. Swan
Lowe's Home Improvements	8333 West Judge Perez (Chalmette, La.)	118,000 SF	J. Fawer
Ochsner (ground lease)	4901 Veterans Blvd (Metairie, La.)	60,000 SF	H. Wren
Petsmart	Riverlands Shopping Center (LaPlace, La.)	7,277 SF	L. Rabin
Smart Source Rentals	4743 River Road (Jefferson, La.)	7,500 SF	A. Lavin
Spokesman Professional Bicycle Works	Northlake Shopping Center (Mandeville, La.)	3,600 SF	Rabin / Kramer
State Farm	644 Terry Parkway (Gretna, La.)	750 SF	Rabin / Kramer

COMPLETED SALES

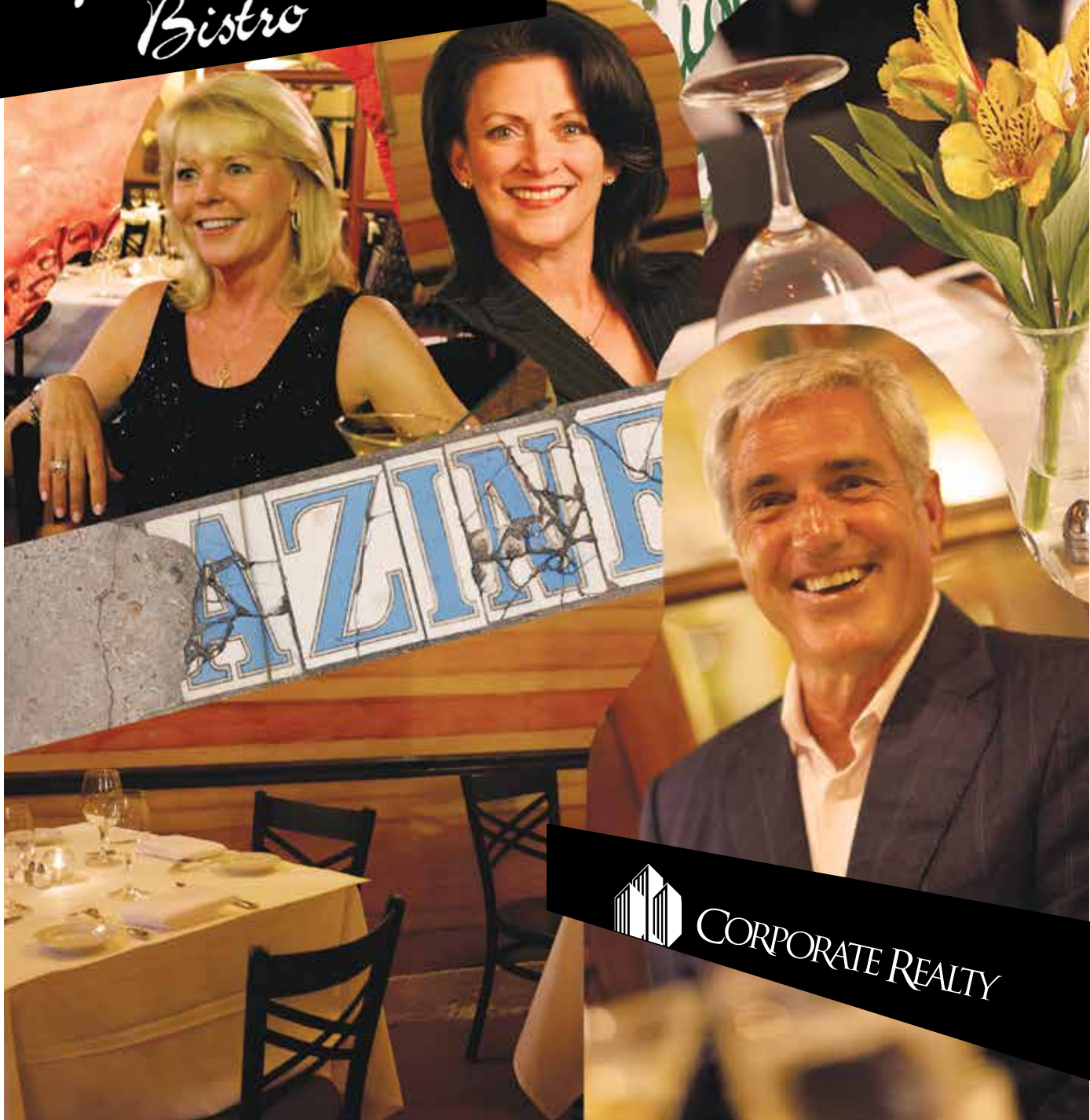
PROPERTY	LOCATION	SIZE	CR BROKER(S)
1511 Sampson Street	Westlake, Louisiana	30,056 SF	Fawer / Siegel
320 Camp Street	New Orleans, Louisiana	8,000 SF	M. Siegel
4508-4512 Papania Street	New Orleans, Louisiana	92,087 SF	K. Adler
5122 River Road	New Orleans, Louisiana	22,000 SF	Jacobson / Wren

NEW LISTINGS

PROPERTY	LOCATION	TYPE	SIZE	CR BROKER(S)
1500 N 19th Street	Monroe, La.	single tenant leased bldg	104,884 SF	Siegel / White
1501-1515 Baronne Street	New Orleans, La.	land for lease	14,800 SF	Burka / Jacobson
42 Colonial Club Drive	Harahan, La.	former country club for sale	30,790 SF	H. Wren
537 S Claiborne Avenue	New Orleans, La.	building for lease	8,800 SF	Burka / Jacobson
709-711 Camp Street	New Orleans, La.	building for sale	5,700 SF	H. Wren



Martinique Bistro



CORPORATE REALTY

Featured from left to right:
Donna Whalen Little, Tenant Representative, Susan Swan, SCLIS, CRX, Sales and Leasing Associate.
Randall White, Sales and Leasing Associate.



Martinique Bistro

Elegant, enchanted and sophisticated,

Martinique Bistro has been celebrated by its local neighborhood for 17 years. Priding themselves on a creative spin on food design, the chefs prepare dishes specifically crafted using hand picked local ingredients, produce and seafoods from nearby farmers and fishermen. The French/Mediterranean eclectic style provides a sophisticated, but casual ambiance and Al Fresco dining in an open-air private courtyard is an additional option to enhance the dining experience.

Gulf Oyster & Housemade Tasso Tourtière

Ingredients

Pie Dough

- 12 ounces all purpose flour
- 1 teaspoon salt
- 6 ounces finely cubed whole butter, chilled
- 3-6 ounces water
- 3 whole eggs
- 2 beaten whole eggs to brush for baking

Measure flour and butter by weight, and water by volume. Sift flour and salt together into a standing mixer fitted with a paddle attachment. Add cubed butter and mix on low speed until crumble stage. Do not overmix. Add eggs one at a time, along with half the water. Once all ingredients are incorporated, add the remaining water if necessary to remove any tackiness until the dough has sheen. Do not overmix. Loosely wrap in plastic and refrigerate for one hour.

Tourtiere Filling

- 1 quart gulf oysters, picked for shells, drained, liquor reserved
- 4 ounces smoked tasso, finely shaved
- 1 pound crimini or button mushrooms, stemmed, cleaned, quartered
- 1 quart fumet, or mild shellfish stock
- Bouquet garni (fresh thyme stems, parsley stems, bay leaf)
- 1 cup heavy cream
- 1 cup 1/8 inch diced potato
- 1 cup 1/8 inch diced parsnip
- 1 cup 1/8 inch diced carrot
- 1 cup 1/8 inch diced celery root
- 1/2 cup light brown roux
- Salt and white pepper to taste
- A 2 1/2 quart shallow baking casserole dish

Method

Preheat oven to 400 degrees. Dice root vegetables and hold in cold water to prevent oxidation. Sauté mushrooms in whole butter until golden brown, add sliced tasso and sauté briefly to open up its spices. Drain excess fat and reserve mushrooms and tasso to the side. Bring stock and bouquet garni to a simmer, add drained root vegetables. Simmer until vegetables are just tender. Add heavy cream and reserved oyster liquor, simmer five minutes and add roux to thicken as needed. Add mushrooms and tasso. Adjust seasoning to taste with salt and white pepper. Place oysters into casserole dish, cover with filling, mix lightly.

On a clean lightly floured surface, roll out dough to preferred pie crust thinness (approximately 1/2 inch), leaving 1 inch overhang on sides. Brush across top with egg wash. Bake in 400 degree oven for 15-20 minutes until golden brown.



CORPORATE REALTY

Please enjoy this recipe from Martinique's Bistro
compliments of **CORPORATE REALTY**

